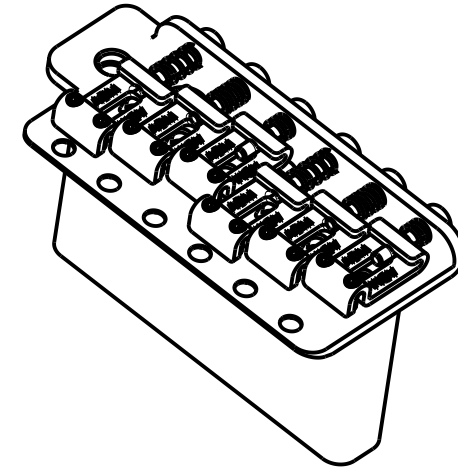
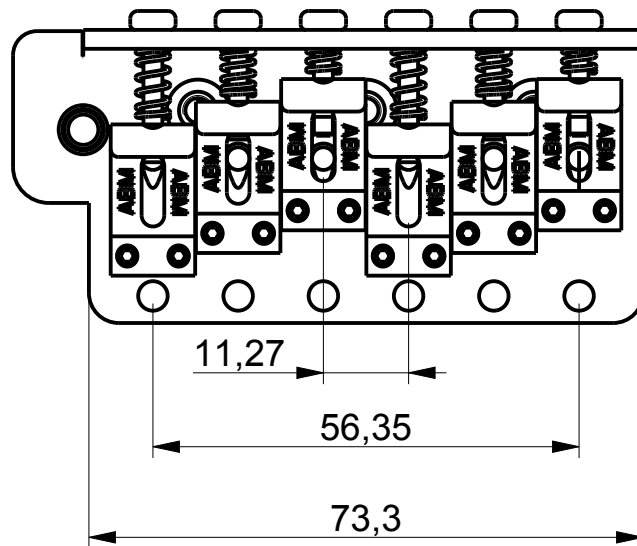
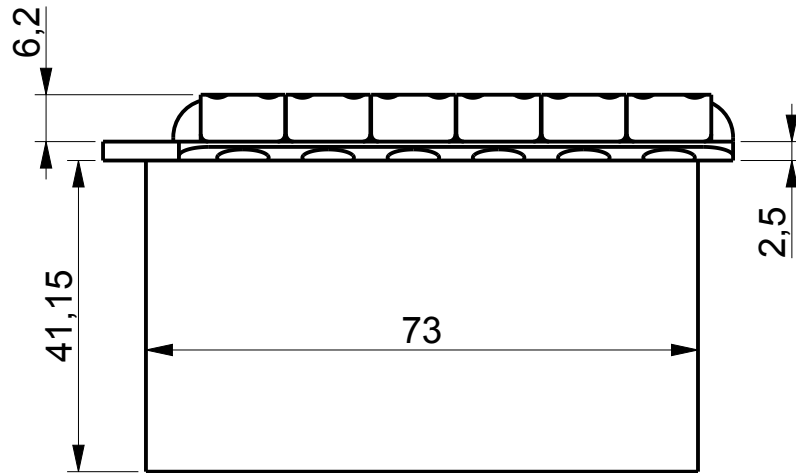


ABM5050-V Vintage Tremolo



Description :

- solid Cold Work Steel base plate with advanced string guide
- direct replacement for 6-point mounting with 56,35 mm string and post spacing
- Cold Rolled Steel saddles with threaded Saddle-Screw-Flanks
- two custom made Torpedo-Knobs, without any edge
- hardened mounting screws
- two tremolo blocks made of Cold Work Steel and Bell Brass, for individual tonal configuration
- plug in stainless steel tremolo bar with adjustable clearance