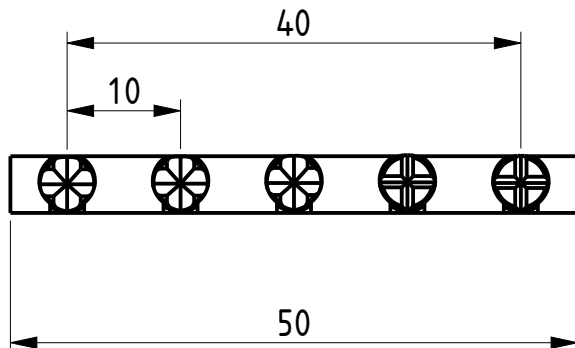
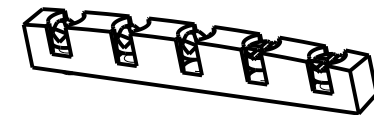
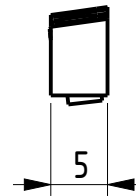
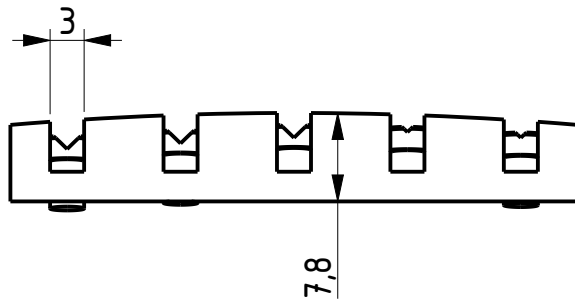


ABM6250b Adjustable Bass Nut



Description :

- milled and turned of solid Bell Brass
- replacement for 5 - string bass nuts
- individual height adjustment of 3 mm on each string
- adjustment screws with crossed V-shape notches for thick and thin bass strings

! The saddle must be glued to correct assembly!
Please remove first the height adjustment screws.

! It may occur at very low string height that the screw-end passes through the underside of the saddle out. Please check before mounting the saddle the necessary height adjustments and provide the neck with corresponding holes.